



# DESIGN CONSULTATION

Past Project Capabilities



LEADERS  RECREATIONAL INNOVATION







# LEADERS RECREATIONAL INNOVATION



We are a specialist team thinking beyond the conventional to create unique, award winning recreational spaces to benefit children, families and communities across Australia.

At Playscape Creations, design consultations are a partnership, where each design collaborator adds their own expertise and a little bit of magic to create truly innovative recreational spaces.

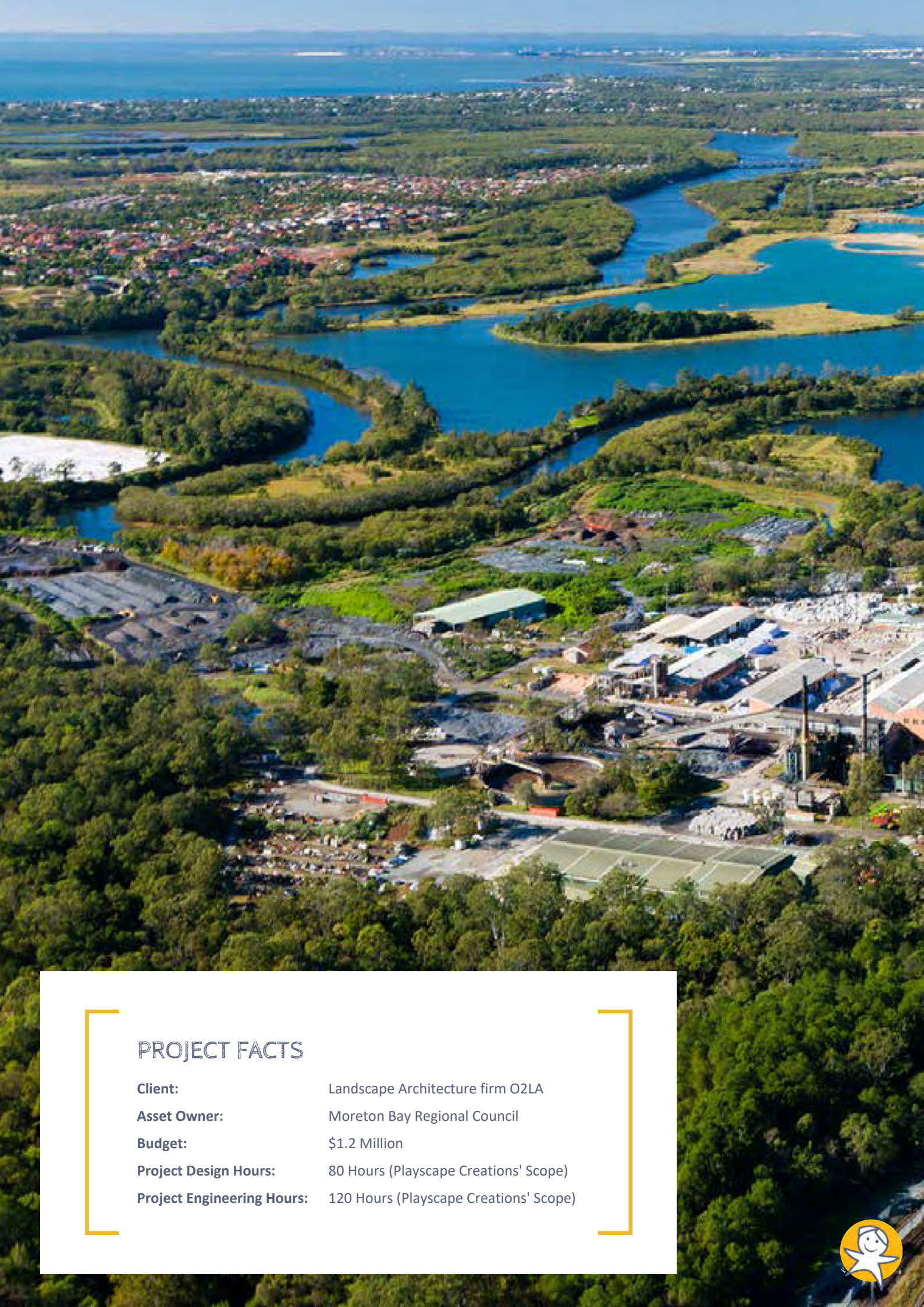
Our in-house design team possess the right skills and experience to support you in the creation of your recreational space vision. Collaboration through community consultation and stakeholder engagement ensures a consistent and harmonious design process that considers all relevant requirements.

Concept design is undertaken in 3-Dimensional space through comprehensive design software right from our first inception meetings, ensuring potential safety and engineering elements are considered prior to design presentation. This provides peace of mind that the concept doesn't just look amazing; it can be engineered and built.

Understanding that every space and every client is different, our team will partner with you to ideate as much or as little of your project as you require; from design through to engineering, fabrication and final construction.







## PROJECT FACTS

<b>Client:</b>	Landscape Architecture firm O2LA
<b>Asset Owner:</b>	Moreton Bay Regional Council
<b>Budget:</b>	\$1.2 Million
<b>Project Design Hours:</b>	80 Hours (Playscape Creations' Scope)
<b>Project Engineering Hours:</b>	120 Hours (Playscape Creations' Scope)





# PETRIE MILL REDEVELOPMENT

In September 2016, the former Petrie paper mill site at Moreton Bay was officially declared a Priority Development Area (PDA) by the Queensland Government.

Known as “The Mill”, this site facilitates integral local development, including construction of the new University of the Sunshine Coast, as well as new health, retail, commercial and residential developments and community infrastructure.



## KEY FACTS

- Priority Declared Area is 460 hectares in size
- Includes 110 hectares of conservation and recreation areas
- Includes major university campus and train station
- Will generate up to \$950 million in economic benefit
- Will deliver up to 6000 ongoing jobs by 2036



**PDA status will unlock the full potential of the university’s surrounding land to create a vibrant community hub where people can live, work and play around education**

Allan Sutherland  
Mayor, Moreton Bay Regional Council



# PROJECT BRIEF & COLLABORATION SCOPE

Playscape Creations was engaged by Landscape Architecture firm O2LA for specialist design advice regarding an interactive water feature, structures, hydraulics, and water filtration and management systems.

The design of the aquatic park needed to be sensitive to the environmental concerns of the surrounding area, while incorporating elements that were unique to The Mill site and the Moreton Bay Region.

Collaborating with the O2LA design team, the initial concept incorporated the snaking path of the Pine River, with custom designed mud crabs paying homage to the interaction of the local fauna and mangroves of the region.

Bringing the history of The Mill into the design was achieved through the conceptualisation of a unique “paper scroll” water discharge bucket. Playscape Creations undertook the detailed design and engineering for this piece, in keeping with the style of the huge paper rolls the Petrie Paper Mill was famous for producing.



Building on the initial concept design, the addition of sluice gates into the river swales give children the opportunity to interact with and control the flow of water across the site, and multiple fountains and ground sprays provide additional tactile and sensory opportunities for users of all ages.

Pathways to the splashpad and waterplay zone have been engineered to assist users of all abilities to gain access to the interactive water features, in-line with Council’s vision for this area.



Collaboration meetings were held with the landscape architect’s design team, both in person and via teleconference to develop the initial concept design and further develop the detailed design. Plans, images and renders were provided to O2LA for incorporation into their plans and presentations for the whole vision for the site to the asset owner, Moreton Bay Regional Council (MBRC).

Once the detailed design was signed off by O2LA and Council, Playscape Creations’ specialist team finalised the detailed structural engineering and hydraulic documentation for tender phase.

MBRC Mayor Allan Sutherland promotes the site as a high-tech hub, incorporating sustainable and specialised technological initiatives throughout the site. Not to be left behind, Playscape Creations has incorporated innovative DMX controlled LED light fountains, adding a choreographed water play experience for the children and an interactive light show art piece for all users at night.





## PETRIE MILL AQUATICS



### PROJECT UPDATE

Construction tenders released by MBRC late 2019, with construction commencing January 2020.

JMAC Constructions Principal Contractor, with O2LA acting as superintendent. Playscape Creations to undertake specialist Aquatics construction project, with the design as per original concept and design documentation.

Integration of a new splash pad featuring interactive choreographed fountains has been included post-tender phase.





# UNIVERSITY OF QLD

In line with the University of Queensland's (UQ) strategy to add to the health and happiness of the wider Brisbane community, Playscape Creations were engaged to collaborate with UQ and various professional and community groups to create a space that would engage and amaze its visitors. The design brief was for an educational playground; where the play is nature-based, environmentally friendly and caters for all-abilities and ages.

UQ facilitated a comprehensive community consultation process, bringing together ideas from the University experts, schools, kindergartens and local parents and children. A "design your dream playground" competition invited children from nearby schools and kindergartens to draw out their ideas of what an ideal playground looked like, and the kind of activities they could undertake.

The 170 entries received gave great insight into the communities' needs; with several common themes and ideas incorporated into the final playspace design.



Taking into consideration the surrounding natural environment, Playscape Creations' park design beautifully incorporates the heritage-listed pine trees, with further plantings and garden beds enhancing the overall aesthetic of the space and providing sensory opportunities for all users. Additional design considerations were made throughout the concept phase, in conjunction with the UQ's Aboriginal and Torres Strait Islander Studies Unit, to include embellishments that pay respect to the longstanding history of the Aboriginal community.







The central feature of the active play zone is the striking Alpha Link Tower; standing at over 6m in height it features a multitude of climbing challenges, a twin racer slide and an exhilarating tube slide - perfect for children exploring their proprioceptive and vestibular abilities and looking to build upper body and core strength. A 40-metre zipline runs along the tennis court boundary, and several swinging options are provided; including a mega swing which promotes social inclusion and spatial awareness.

Over in the junior zone, there is a pre-school sized play unit which is perfect for younger explorers as it includes educational games such as magnets, puzzles and an activity table.



Other features include a huge sandpit where kids can experience an archaeological excavation to discover 'dinosaur bones' or use the self-powered diggers to build their own structures. Running through the sandpit is an old-fashioned water pump, allowing children to create dams along the creek bed while developing social skills as they play cooperatively with others.

## PROJECT FACTS

### Client and Asset Owner

University of Queensland

### Budget

\$650k (Playground Scope)

### Custom Design Elements

Australian Fauna Entrance Totems

Misting Totems

Fossil Dig







UNIVERSITY OF QLD



## PROJECT UPDATE

Playscape Creations worked in collaboration with Naturform landscape construction contractors to deliver this project. Construction works were located adjacent to a high trafficable area which required significant planning to ensure public safety was always maintained.

The project was successfully delivered on time and on budget, with the grand opening in November 2019.





Meandering concrete pathways provide all-abilities access to the play equipment including an inclusive carousel and interactive musical instruments. Sensory elements abound; from the musical instruments adding a beautiful layer of sound to the playspace, to the use of different ground surfacing materials to feel and investigate. Hand-carved timber totems featuring native Australian Fauna adorn the entry pathway, and custom misting totems entice children to stay cool. There is something new to discover with every visit.

Shade was a key consideration for this playspace design. While some shade is offered by the established trees, it is not sufficient to cater for long play stays or children with disabilities. As a result, the shade sail design has been optimised to provide the maximum amount of shade without impacting on the pathways or park thoroughfares. The integration of magical wording into the shade sail posts elevates these from a utilitarian item to an integral part of the space.

There is comfortable and shaded seating throughout the park and the open design allows carers to watch multiple children play simultaneously. A kiosk, picnic tables and BBQ's are also available so you can stay and play all day.



“

**The playground has been built in recognition of the knowledge that play is a core ingredient in learning and development.**

**We hope it will be an intergenerational source of fun.**

Greg Pringle  
UQ Chief Operating Officer

”







## PROJECT FACTS

<b>Client:</b>	Landscape Architecture firm Tract Consultants
<b>Asset Owner:</b>	Fraser Coast Regional Council
<b>Budget:</b>	\$1.5 Million (Waterplay Scope)
<b>Project Design Hours:</b>	95 Hours (Playscape Creations Scope)
<b>Project Engineering Hours:</b>	120 Hours (Playscape Creations Scope)
<b>Custom Design Elements:</b>	Sugar Silo and Spoon Discharge Bucket Sugar Cane Misting Towers 5m diameter hang out hammock Sensory Wall





# ANZAC PARK, MARYBOROUGH

Tract Consultants developed the Master Plan for the redevelopment of the Maryborough foreshore and Anzac Park area, including an aquatics park, extensive landscaping and recreational facilities carpark and amenities block.

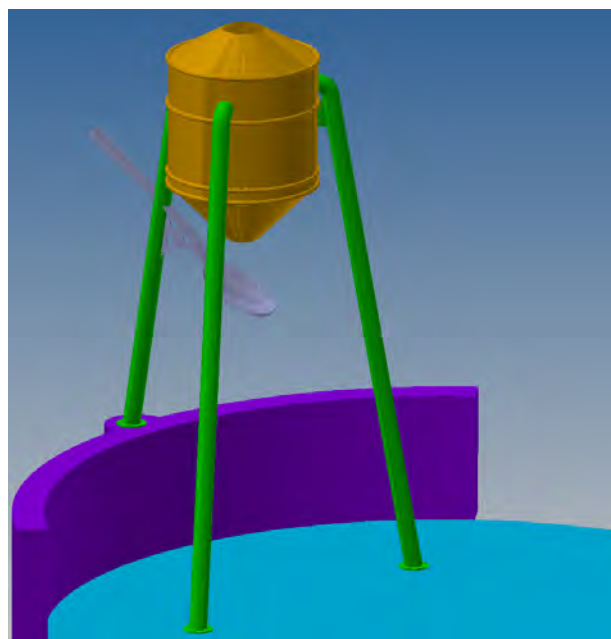
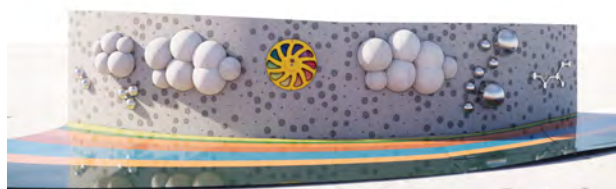
Playscape Creations were engaged to take Tract's vision from a concept design through to a resolved engineering design, ready for fabrication.

Maryborough is the birthplace of PL Travers, author of the beloved children's novels featuring Mary Poppins. Tract's design featured elements from Mary Poppins's story, disguised to create wonder for the park users and generate a feeling of discovery with every visit.



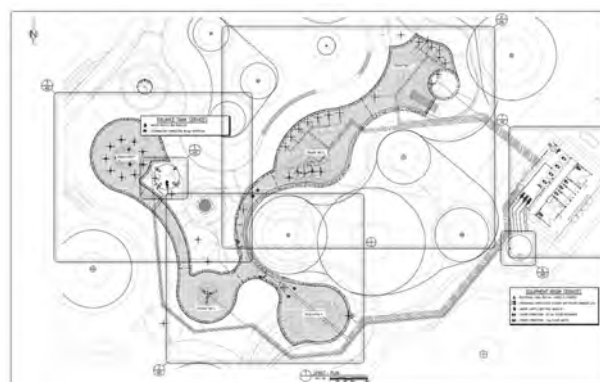
The hero element, a discharge bucket styled to reflect Mary Poppins's "Spoonful of Sugar" recipe creates an exciting backdrop incorporating rainbow pathways, a central fountain and custom designed misting towers that reference the region's famous sugar cane production.

Using in-house engineering expertise, the Playscape Creations team took these custom design elements from a concept through to a resolved design, ready for custom fabrication.



Structural engineering for the waterplay slab was also undertaken, including the incorporation of swales and concrete seating to allow for additional water interaction.

Finally, hydraulic engineering and equipotential bonding plans were created to study water flows across the site and determine requirements for water management and treatment facilities. Documentation was all prepared to be issued for tender by Council.



## PROJECT UPDATE

Construction tenders released by Fraser Coast Regional Council late 2019, with construction to commence in 2020.



# RIVERSIDE PRECINCT, BUNDABERG

Council's aim for the redevelopment of the Bundaberg Riverside Precinct is to create a revitalised and iconic destination that reconnects the river to the city of Bundaberg, revealing its heritage, people, culture and opportunity.

As masterplanners for the whole site, Tract's landscape architects wanted to re-integrate the organic flow of the water into a location that experiences flooding; rather than trying to block the water flow currently confined by rigid river banks, the idea is to open water movement through the site in a way that can be better managed and controlled.

In an ambitious landscape adaptation, the masterplan called for the creation of a brand new headland, with the organic shape reminiscent of the way water alters the land. In an area where there are currently naturally carved riverbanks, the new plan called for excavation along the cliff, the provision of engineered piers and then backfill the create a new recreational area above the reach of the floodwaters. Additional terracing and landscaping allow access to the river and the pathways that follow its path.

The new, elevated recreational area is to include an adventure playground and adjacent aquatic park that is iconic to Bundaberg; it will be a huge drawcard to the area both for locals and tourism.

## PROJECT FACTS

### Client

Landscape Architecture firm Tract Consultants

### Asset Owner

Bundaberg Regional Council

### Budget

\$17 million (Whole Site Redevelopment)

### Project Design Hours

150 Hours (Playscape Creations Scope)

### Project Engineering Hours

20 Hours (Preliminary engineering only)

### Custom Design Elements

Adventure Play Towers

Custom Aquatic Park and features



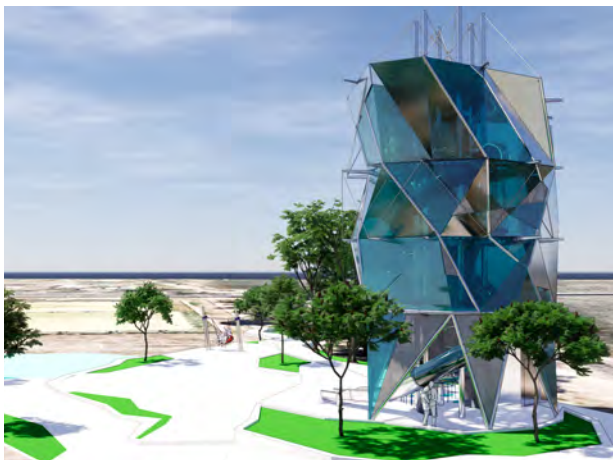


# PROJECT BRIEF & COLLABORATION SCOPE

Playscape Creations were engaged by Tract to ideate an adventure playground on a scale we've never seen before; with towers, heightened viewpoints and lots of challenge to cater to users of all ages and abilities.

The adventure playground had to flow across multiple levels within the new recreational footprint, as well as integrate with the theming and vision for the aquatic park.

Two initial concept designs were provided to the Tract team; custom towers with different façade treatments designed to attract people from the CBD across to the Riverside Precinct to explore.



Ongoing collaboration meetings were held between the design teams to further resolve the design and add scale and play value to the area.







## ADVENTURE PLAY

The final design features three towers at different heights, joined by curved connection tunnels that reflect the flow of the river below.

Thrilling slides and climbing options abound, with a huge hangout net central to the tower structure and custom created cliff climbers and steppers that add to the overall landscape.







## AQUATIC PLAY

The aquatic environment continues the ideas of terracing and re-forming the land through water play, with swales, river courses and islands cut through the plaza and augmented by ground sprays and interactive fountains.

At night, the aquatic park becomes a wonderland, with light up features continuing the use of the space after dark.







## PROJECT FACTS

<b>Client:</b>	Collaboration between Landscape Architecture firm Urbis and Construction firm Interface Landscapes
<b>Asset Owner:</b>	Logan City Council
<b>Budget:</b>	\$1.5 Million (Waterplay Scope)
<b>Project Design Hours:</b>	120 Hours (Playscape Creations Scope)
<b>Project Engineering Hours:</b>	200 Hours (Playscape Creations Scope)
<b>Custom Design Elements:</b>	Misting Towers Waterplay Table Custom Choreographed fountain and light show





# LOGAN GARDENS WATERPARK

Spread over several hectares of landscaped parklands in Logan Central, Logan Gardens is a green oasis amid an otherwise bustling region.

The site for the Logan Gardens waterpark is adjacent to the exciting adventure playground, with Council's intent for the Water Park to add to the variety of passive and recreational play activities available to enhance the Gardens and its connection to surrounding community.

As a culturally diverse region, it was important to the design team to acknowledge all of the different cultures that have chosen to call the Logan area home; thus the idea of the "Flags of the World" was born. A fusion of different flag designs and colours from around the world, these eye-catching designs have been integrated into the shade sail posts and misting totems, upgrading these elements from utilitarian to an integral part of the design itself. The assimilation of both structural and functional uses delivers construction cost savings by incorporating water play, shade sail posts, footings and lighting into one repeatable element.



Design Render

The ground plane for the waterplay is a tiered water experience, with exposure to both ground level and elevated water features. A 50 - 75mm deep wading space provides a safe area for younger children to splash and explore and bench seating and shade has been carefully designed to provide all-day comfort for both users and carers.



Design Render

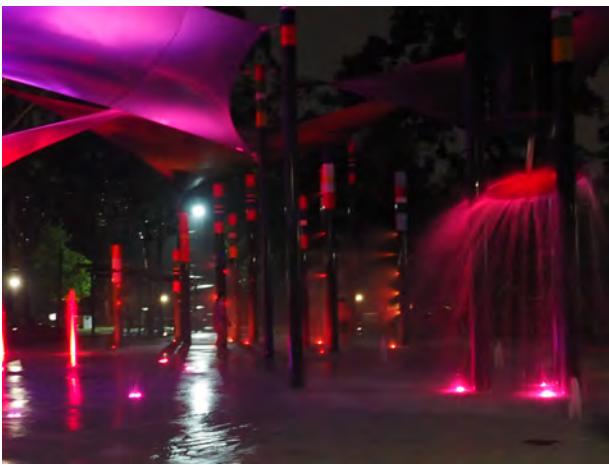


Design Render



# PROJECT BRIEF & COLLABORATION SCOPE

The choreographed fountains are one of the first installations of its kind in Australia, with multiple light and fountain shows developed to add exciting theatrical elements to the space. At night, this stunning display lights up to complement the “Flags of the World” theme, providing a central community hub for events and social activation late into the night.



To cater to users of all ages and abilities, a 14 tonne custom raised concrete water table was designed and developed to give all users access to water interaction and an educational aquatic experience.



The park also features 10 custom totem poles, 20 ancillary jets and ground sprays, custom spray poles and a stainless steel siphon system discharge bucket.



The collaboration between Urbis, Interface and Playscape Creations offered the Client a complete project design experience, with consideration given to the overall master-planning, waterplay fabrication and hydraulic design and best practise construction methodology right from the beginning.



## LOGAN GARDENS WATERPARK



### PROJECT UPDATE

Construction of the water park completed in December 2019, with final landscaping completed in January 2020.

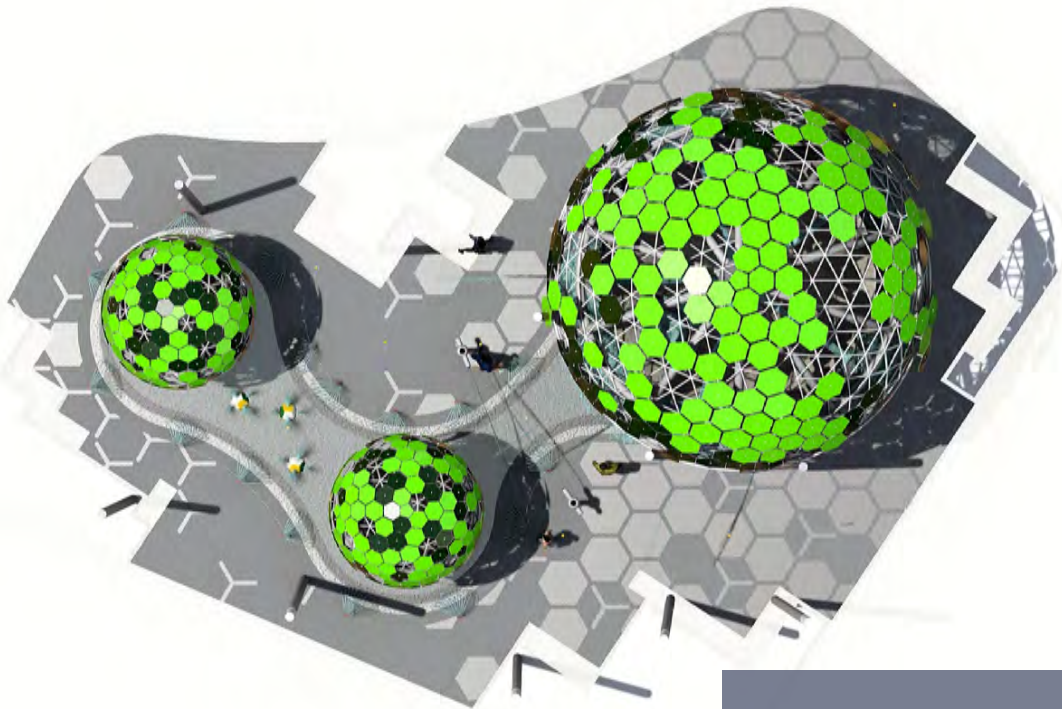
The waterpark grand opening occurred over the Australia Day long weekend to great community feedback.

Patronage at the park was more than double what was expected; but all park systems handled the additional bather load without incident.

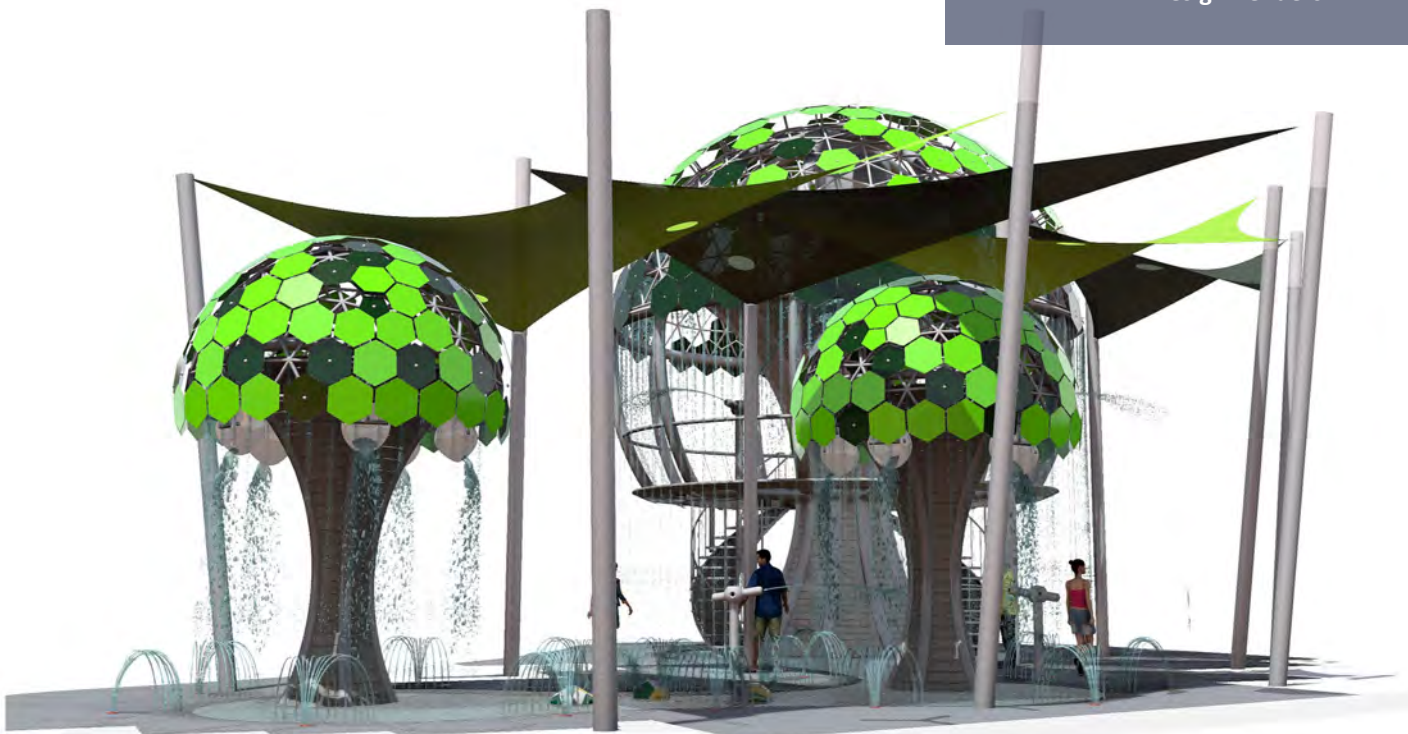
Playscape Creations' project completion marketing saw the Logan Gardens project go viral, with one organic Facebook post reaching more than 93,000 people and gathering important positive community feedback for the clients.







Playscape Creations  
Design Renders



## PROJECT FACTS

<b>Client:</b>	Landscape Architecture firm Urbis
<b>Asset Owner:</b>	Joint Venture Partners PEET and Logan City Council
<b>Budget:</b>	\$2.8 Million (Waterplay Scope)
<b>Project Design Hours:</b>	500 hours
<b>Project Engineering Hours:</b>	400 hours
<b>Custom Design Elements:</b>	All Raintrees Discharge and Dumping Buckets





# FLAGSTONE WATERPARK

In collaboration with Landscape Architecture firm Urbis, our design teams came together to imagine an iconic waterpark; custom built to service the Flagstone Community, attract new families to the area for Flagstone's developer, PEET and to create an ongoing community asset for Logan City Council, who are also PEET's joint venture partner.

Consideration of all three stakeholder parties was crucial to the success of this project; working hand in hand with the landscape architects to achieve their vision for the space while delivering an asset worthy of the investment made by PEET while meeting Tier One developers expectations and ensuring the final completed waterpark aligned with Council abilities to provide ongoing maintenance.

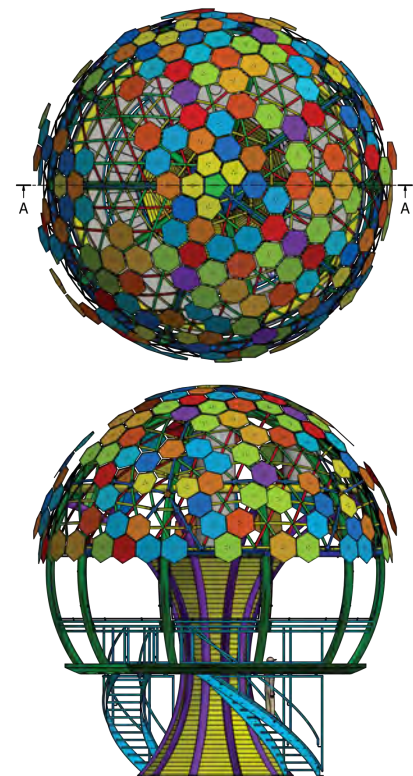
Inspired by magical treehouses from our childhood and meeting a child's innate need to climb, fantasise, socialise and play, the design team collaborated over more than 500 design hours to create this concept. The creation of such an ambitious design required a deep understanding of the fundamental logistics of water management, playground and aquatic safety standards and of course a generous dose of fun and imagination.

## FLAGSTONE COMMUNITY SNAPSHOT

Located 60km south-west of Brisbane's CBD, Flagstone has been masterplanned by PEET with the vision to achieve construction of 50,000 dwellings housing a population of up to 120,000 people. With planned rail links and a thriving local CBD, the estate's recreational areas are a key factor in attracting people and families to invest in the area.

Incorporating three raintrees into a compact site, the central raintree stands at over 10m high and reaches 10m wide, overflowing with fun including two intense discharge buckets, a rainfall curtain surrounding the canopy and water cannons to encourage multi-level play. A further two raintrees decorate the site, providing quieter opportunities for younger children with cherry inspired tipping buckets and over 20 ground sprays.

The hero feature of the raintrees are the massive geodesic domes which form the canopy of each tree; clad in hexagonal "leaves" to inspire a tree canopy cover.



It took more than 400 specialist engineering man-hours to design and develop the concept design into a workable model that could be constructed. A huge canopy layered with complex hexagons; intricate geometric mathematics and multiple 3D programs were utilised to create a roof structure capable of incorporating the hexagons, curved bars and node connections required to bear the structural and water loads of the completed raintrees.



# PROJECT BRIEF & COLLABORATION SCOPE

In total, the roof structures of the rain-trees contain 360 hexagonal facade plates and over 900 fixing bolts. Each piece was individually engineered, crafted and installed to fit perfectly over the subframes.



Geotechnical conditions on-site required careful consideration throughout engineering, with screw piers placed strategically under the rain-trees to accommodate the high structural and hydraulic loads.



## PROJECT UPDATE

Breaking ground commenced on the 8 July 2019 with more than 200m<sup>3</sup> of bulk earthworks and installation of 98 screw piers to stabilise the site. To get the water flowing, over 10km+ of pipe runs were installed before the structural slab could be poured.

Excavation of the site was undertaken with minimal disturbances and flawless execution of foundational plumbing and pipework. Several Inspection Test Plans (ITP) and Engineering Hold Points ensured that all critical factors were met prior to key construction phases.

Fabrication of the raintree components and structural steel frames took over four months to complete off site. During this time, all of the civil works were being conducted in parallel, reducing total construction timeframes.



Prior to delivery on-site, several non-destructive tests were conducted to ensure the structural integrity of every element and guarantee the pieces would fit together perfectly. All elements were then protected by hot dipped galvanisation post fabrication and then a three coat paint system, ensuring ultimate longevity of the structure.



## FLAGSTONE WATERPARK

### PROJECT COMPLETED

#### Successful Project Completion and Handover 9th December, 2019

As a key component of the waterpark infrastructure, the plant room was constructed early in the programme to integrate with the balance tanks and equipment pipe runs.

To maintain water quality, high-tech specialist equipment is used to recirculate and save our precious water resources. All of the water used in the park is drained into underground balance tanks which then pass through an automatic filtration and sanitation system, ensuring only clean filtered water is delivered to the splash pad.

Ground sprays were installed in the slab surrounding each of the smaller trees, providing interactive play elements that are also energy efficient.

The splashpad's surface has been finished with flowing lines of vibrant "Tuff Coat" surfacing; a state of the art, non-slip, durable coating capable of withstanding a waterplay environment. The vibrant blue and sandy colours are complemented by a stencilled hexagonal pattern that pays homage to the tree top canopy and frames the whole play space.

To escape the hot summer sun, the park has been equipped with four custom hyper shade sails ranging at heights of 4.5 – 7.5m, providing 220m shade all year round so park goers can comfortably stay and play all day!







## PROJECT FACTS

<b>Client and Asset Owner:</b>	Winton Shire Council
<b>Budget:</b>	\$1.5 Million
<b>Project Design Hours:</b>	90 hours
<b>Project Engineering Hours:</b>	180 hours
<b>Custom Design Elements:</b>	Complete splashpad and all interactive elements





# WINTON AQUATIC PARK

In the central heartland of Queensland lies Winton; a small town steeped in nature, culture and history. From prehistoric dinosaur sites to boulder opals, stunning National Parks and the legend of Waltzing Matilda, Winton is a thriving destination for travellers from around Australia.

Winton's Aquatic Centre features three public swimming pools to help Winton residents and visitors to cope with the sweltering summertime temperatures.

In a bold move to prioritise youth engagement in the town, Winton Shire Council, jointly funded by the Works for Queensland program, chose to expand the Aquatic Centre with the introduction of an aquatic playground.

Council's vision for this space was to create a dedicated waterpark; the facility needed to be big enough not just for the local community but to create a drawcard for the whole region, attracting travellers from Longreach and all over Queensland to Winton to discover the town and to create ongoing economic and social benefits for the whole community.

As aquatic specialists, Playscape Creations were engaged to create a waterpark design that re-tells the Waltzing Matilda story in an abstract and contemporary manner through themed products, customised surfacing treatment and sequenced/choreographed water features.

Designed to take park patrons on a journey of exploration and intrigue through the story of Waltzing Matilda, waterplay elements from bubblers and stream jets transition to more volumous activities such as small tipping buckets, arch sprays and ground sprays. Interactive water cannons and a huge tipping bucket make for more dynamic waterplay, with the journey culminating with the ghost of Waltzing Matilda rising from the ground utilising sequenced misting sprays.

Strategic product selection in their abstract form entices users to use their imagination and visualisation to relive the story in a fun and safe environment. Design consideration was also given to bather loads, hydraulic and structural engineering, as well as all-abilities, wheelchair access and minimum ongoing maintenance requirements.









LEADERS  RECREATIONAL INNOVATION

**ABN** 40 126 685 914

 553 Boundary Road,  
Richlands QLD 4076

 1300 669 074

 [info@playscapecreations.com.au](mailto:info@playscapecreations.com.au)

 [playscapecreations.com.au](http://playscapecreations.com.au)